

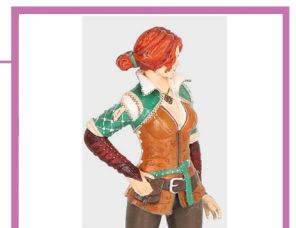
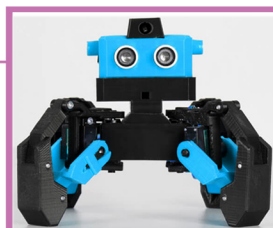
CR-10 V2



Shop Online

#### APPLICATIONS

- Architecture & Designers
- Medical Field
- Animation Field



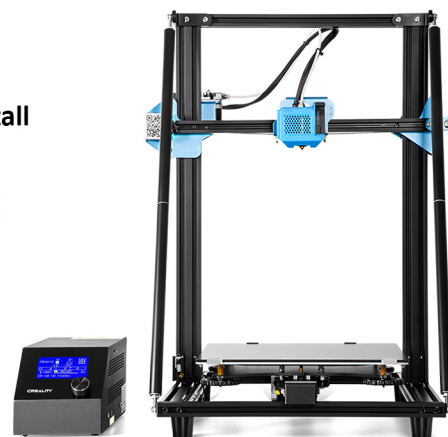
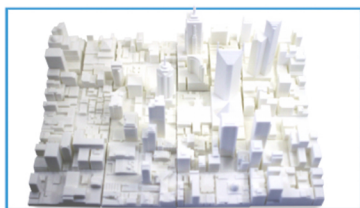
# CR-10 V2



## DIY FUN & STABLE PERFORMANCES

### FEATURES

- Two-way sphenoid cooling nozzle
- TMC2208 ultra-quiet drive, high performance and stability
- 24V / 350W Mingwei power supply, stable power supply
- BL-Touch bed-leveling frame – allowing the user too easily install
- High-standard V-profiles to reduce sloshing during motion
- Resume-print function, Filament run-out detection



### PRINTING

Printing Technology	FDM
Printing Size	300*300*400mm
Printing speed	≤180mm/s,normal 30-60mm/s
Precision	±0.1mm
Layer thickness	0.1-0.4mm
Nozzle Diameter	Standard 0.4mm
Hotbed temperature	≤100°C
Working Mode	online or SD slot offline printing
File format	STL\OBJ\AMF

### SOFTWARE & ELECTRICAL

Power supply	AC Input 115V/230V Output: 24V
Power rating	350W
Auto leveling	Optional
Filaments	PLA/ABS/PETG/TPU
Filament diameter	1.75mm
Slicing software	Cura\Repetier-Host\ Simplify 3D

### MECHANICAL & DIMENSIONS

Extruder Quantity	Single
Product Dimensions	420x550x650 mm
N.W.	11.5KG